

# LIPOncel™

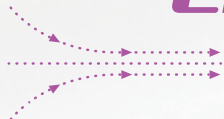
## LIPOncel™ Clinical Data

The LIPOncel™ procedure guarantees high safety by using a noninvasive method, based on HIFU (High-Intensity Focused Ultrasound), so as not to damage the peripheral tissues, and transmits energy precisely only to the subcutaneous fat layer.

# Better You



HIFU System



### LIPOncel™

Fat Reduction



Waist Circumference Reduction

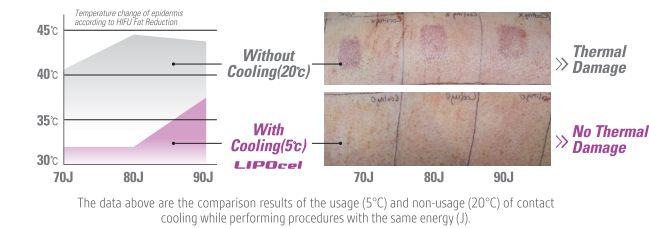
From the mechanism of contact cooling, this will reduce pain in the epidermal area and nerve area. And it can make it possible to have higher energy delivery.



FEATURES

- 01 Better Result**  
The high temperature on the target raises the temperature of subcutaneous fat cells to over 70 °C by using powerful energy up to a maximum of 150 J.
- 02 No Pain - Contact Cooling**  
Cooling on the approximal surface of skin by using Chill Cartridge(5 °C). This will reduce pain in the epidermal and nerve area And it can make it possible to have higher energy delivery.
- 03 No Downtime, No hurdles for normal life**  
The epidermis always remains safe because a direct focal zone is formed only on subcutaneous fat layers below 1.3 cm.

EFFECTIVENESS

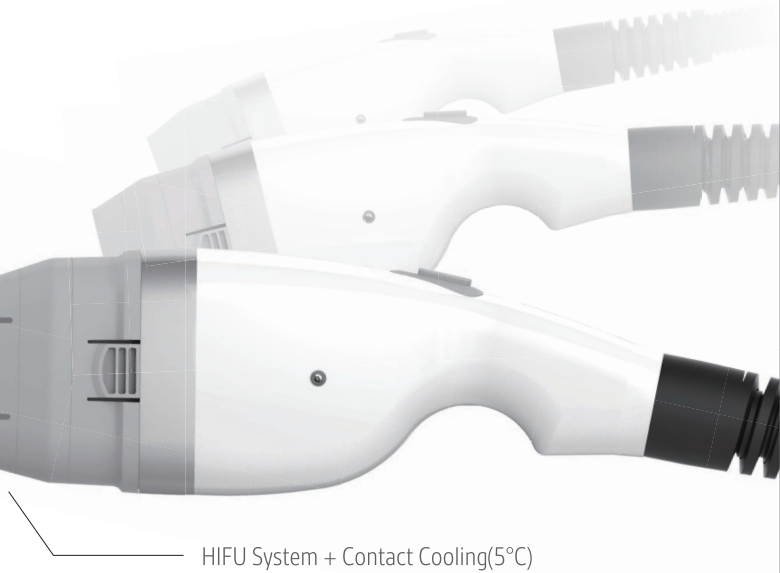


INDICATIONS

- Fat Reduction
- Love Handles Reduction
- Waist Circumference Reduction



Less Pain, Higher Energy With Contact Cooling !  
Next Generation HIFU System - LIPOfcel™ !

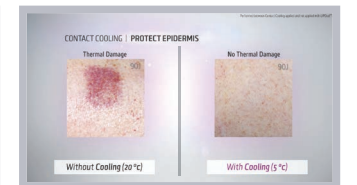
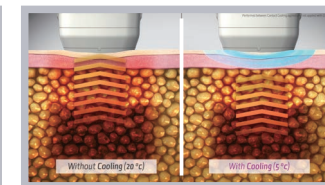
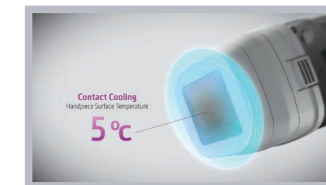


# LIPOfcel™

From the mechanism of contact cooling, this will reduce pain in the epidermal and nerve area. And it can make it possible to have higher energy delivery.



## LIPOfcel™

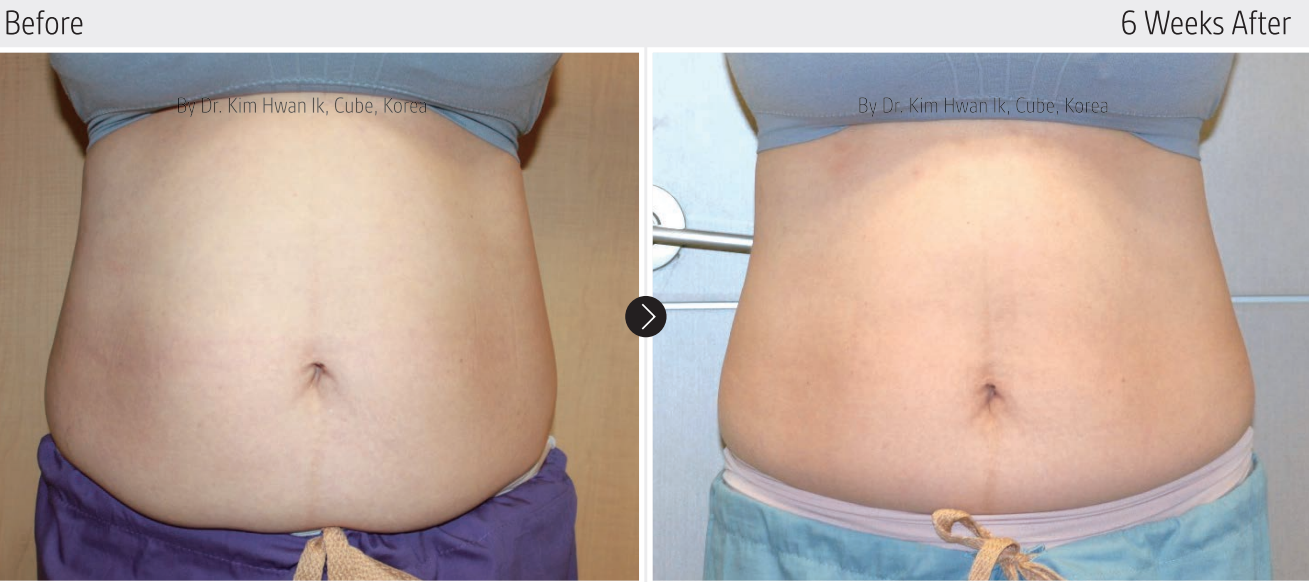


LIPOfcel™ has a very special contact cooling system. It reduces surface temperature of handpiece down to 5 °C. This is the most important technology. From the mechanism of contact cooling, this will reduce pain in the epidermal and nerve area. And it can make it possible to have higher energy delivery.

USER INTERFACE







[ CASE 01 ]

3 stacking, 75J/cm<sup>2</sup>, total 70 shot  
Abdominal Girth Reduction : - 3 cm (upper), - 4.5 cm (lower)



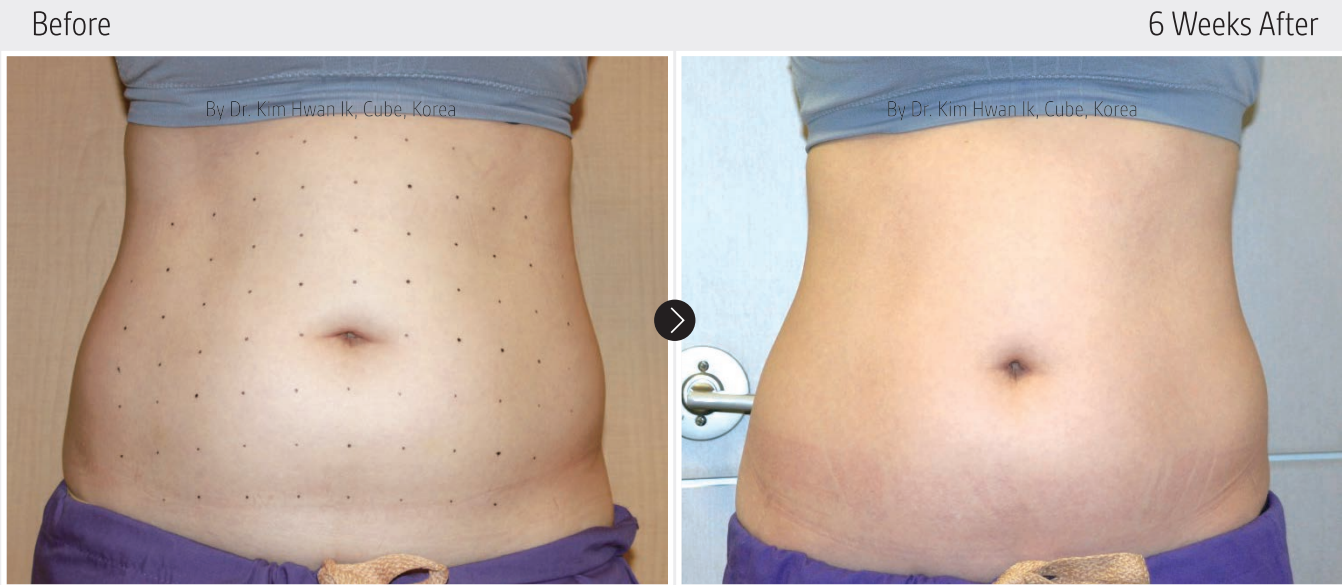
[ CASE 03 ]

3 stacking, total 65 shot  
100J/cm<sup>2</sup>:1<sup>st</sup> stacking, 95J/cm<sup>2</sup>:2<sup>nd</sup> stacking, 90/cm<sup>2</sup>:3<sup>rd</sup> stacking (service mode)  
Abdominal Girth Reduction : - 4 cm (upper), - 9 cm (navel), - 3 cm (lower)



[ CASE 02 ]

No Data  
Abdominal Girth Reduction : - 2 cm (upper), - 4 cm(navel), - 5.5 cm (lower)



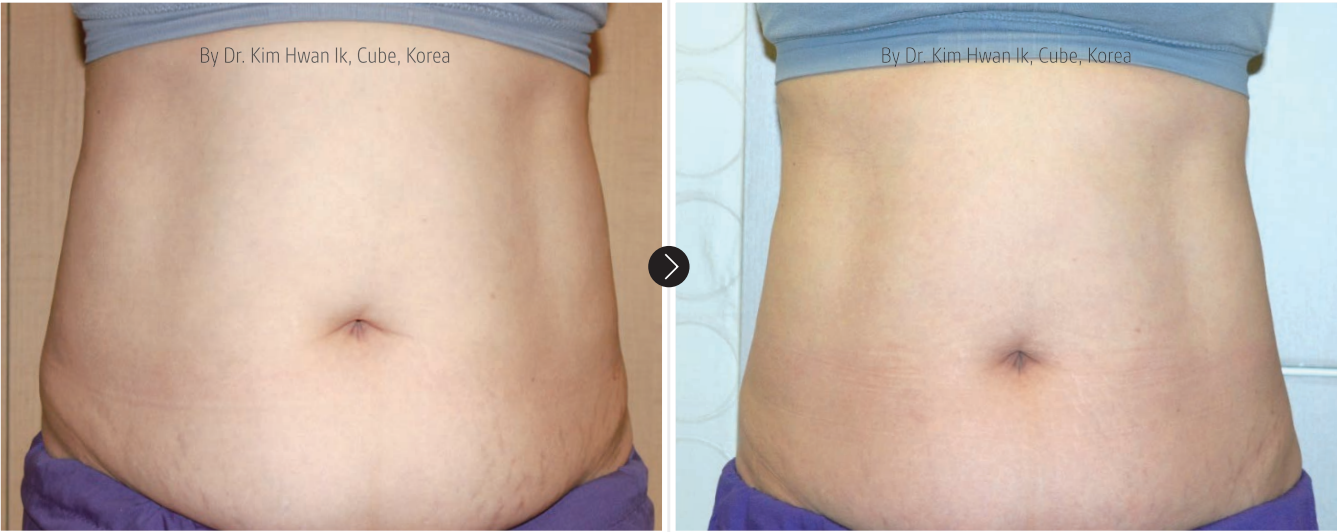
[ CASE 03 ]

3 stacking, total 65 shot  
100J/cm<sup>2</sup>:1<sup>st</sup> stacking, 95J/cm<sup>2</sup>:2<sup>nd</sup> stacking, 90/cm<sup>2</sup>:3<sup>rd</sup> stacking (service mode)  
Abdominal Girth Reduction : - 4 cm (upper), - 9 cm (navel), - 3 cm (lower)



Before

2 Months After



[ CASE 04 ]

3 stacking, total 116 shot  
90J/cm<sup>2</sup>:1<sup>st</sup> stacking, 85J/cm<sup>2</sup>:2<sup>nd</sup> stacking, 80/cm<sup>2</sup>:3<sup>rd</sup> stacking (service mode)  
Abdominal Girth Reduction : - 6 cm (upper), - 3 cm (navel), - 3.5 cm (lower)

Before

2 Months After



[ CASE 04 ]

3 stacking, total 116 shot  
90J/cm<sup>2</sup>:1<sup>st</sup> stacking, 85J/cm<sup>2</sup>:2<sup>nd</sup> stacking, 80/cm<sup>2</sup>:3<sup>rd</sup> stacking (service mode)  
Abdominal Girth Reduction : - 6 cm (upper), - 3 cm (navel), - 3.5 cm (lower)

Before

2 Months After



[ CASE 04 ]

3 stacking, total 116 shot  
90J/cm<sup>2</sup>:1<sup>st</sup> stacking, 85J/cm<sup>2</sup>:2<sup>nd</sup> stacking, 80/cm<sup>2</sup>:3<sup>rd</sup> stacking (service mode)  
Abdominal Girth Reduction : - 6 cm (upper), - 3 cm (navel), - 3.5 cm (lower)

Before

2 Months After



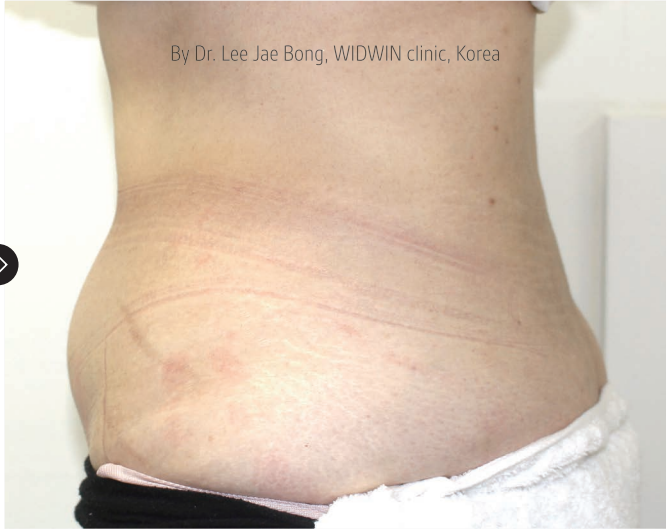
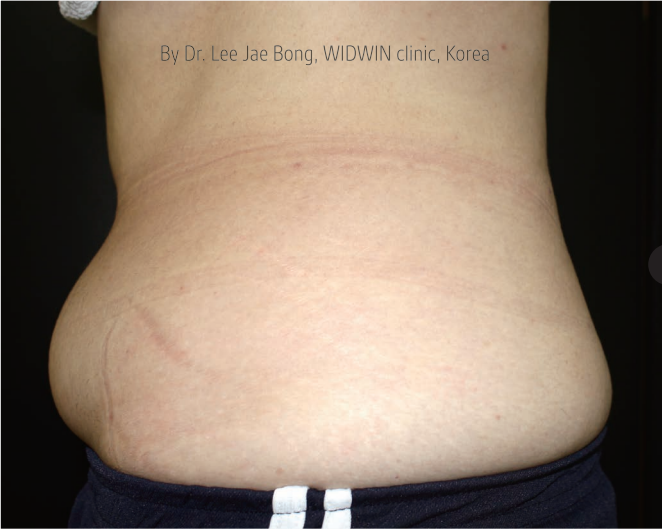
[ CASE 05 ]

3 stacking, 80J/cm<sup>2</sup>, total 92 shot  
Abdominal Girth Reduction : - 5 cm (lower), - 7.6 cm (right)



Before

2 Months After

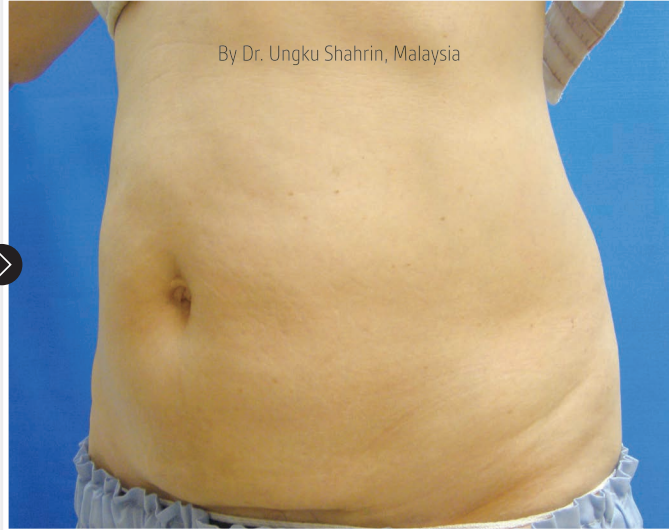


[ CASE 05 ]

3 stacking, 80J/cm<sup>2</sup>, total 92 shot  
Abdominal Girth Reduction : - 5 cm (lower), - 7.6 cm (right)

Before

After



[ CASE 07 ]

No Data

Before

2 Weeks After

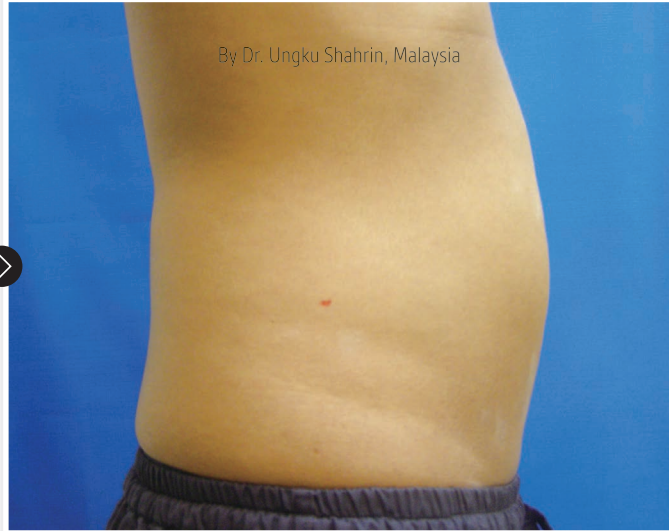
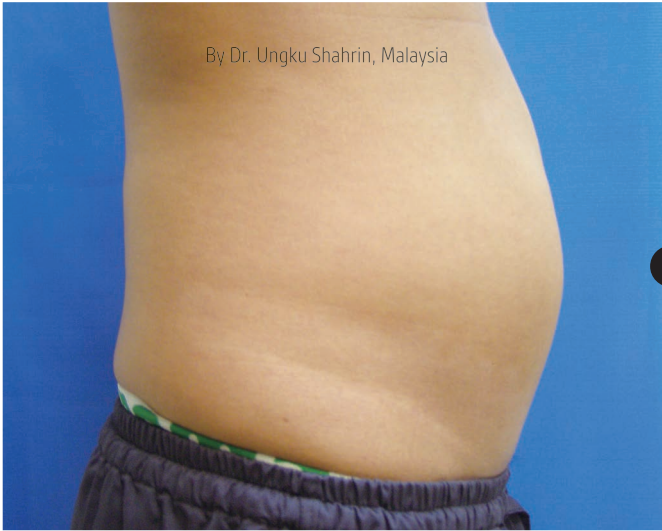


[ CASE 06 ]

3 stacking, 80J/cm<sup>2</sup>, total 96 shot  
Abdominal Girth Reduction : - 3 cm (lower), - 3.5 cm (right)

Before

After



[ CASE 08 ]

No Data





## LIPOcel™ Non-Invasive Fat Reduction HIFU System

### Dr. Hwan-ik Kim

Cube Aesthetic Clinic - Representative Director / Cosmetic Surgery - Specialist  
Member of the Korean Society Plastic and Reconstructive Surgeons / Member of the Korean Society for Aesthetic Plastic Surgery

#### Equipment Introduction and Features

LIPOcel™ is a product using HIFU for cosmetic purposes of body contouring approved by the Food and Drug Administration as an equipment for waist size reduction. LIPOcel™ uses high intensity focused ultrasound energy, and precisely focuses the energy on the subcutaneous fat layer using non-surgical and non-invasive ways without damaging any surrounding tissues. Thus it is equipped with safe medical procedures. In addition, it breaks down fat cells with high temperature. Its advantage lies in creating excellent results with a small number of treatments.

#### Recommended Target Patients

This treatment method is optimized for the patients who cannot receive surgery or wish to avoid surgical methods. The treatment of abdomen and flanks using HIFU enables the reduction of waist size by a minimum 2cm after a single treatment. When consulting a patient, a doctor must notify that the procedure using LIPOcel™ is a body contouring treatment, which is not an ultimate solution for reducing weight or curing obesity.

The patient group that LIPOcel™ can be ideally applied is a contemporary man who has abdomen and flanks resistant to the effects of exercise or diet control, or who has a hard time doing exercise or diet control due to his/her vigorous social activities such as school or work. Among these patients, a patient who has a BMI of 30 or lower, good skin tone and elasticity, at least 2.5 cm or more of subcutaneous fat, no scars in the treatment area, and who has realistic expectations about the treatment is the ideal patient. When it comes to evaluating a patient, their subcutaneous fat volume can be checked by using calipers or a pinch test. If you wish to measure more accurately, the ultrasonic instrument can be used to measure the thickness of the subcutaneous fat.

There are patients that should not receive HIFU treatment. Such patients include those with ruptures around the treatment area, pregnant women or those with the possibility of pregnancy, and those with less than 1 cm of subcutaneous fat thickness. Like all other medical treatments, checking the medical history of a patient and the status of his/her body must be done under any circumstances.

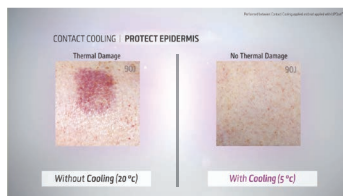
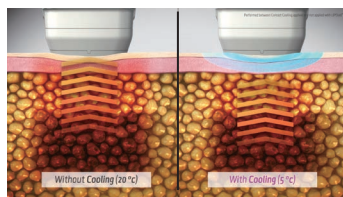
#### Factors to Consider for Treatment Procedure

The first factor to be considered for treatment procedures is pain. The higher the energy applied, the more the patient feels discomfort. In some cases, pretreatment for pain relief was conducted, but for the majority of the cases, there were no pretreatments. Although there were some cases of pain after the treatment, prolonged tenderness, ecchymosis, lumps, edema, etc. following treatment, such symptoms did not develop into health concerns. If lymph circulation is promoted by massage and radio frequency treatment, LIPOcel™ treatment will ensure faster and enhanced benefits.

#### Reasons for Recommendation

LIPOcel™ is equipped with a contact cooling system, which keeps the pain to a tolerable level even when high energy is applied. This reduces the discomfort that most patients experience after treatment procedure conducted without pretreatment. I anticipate that LIPOcel™ will be applicable to various parts of the body after the user obtains thorough knowledge in anatomy, and when a cartridge that can diversely adjust the depth of the target procedural layer is developed.

“  
LIPOcel™ is equipped with a contact cooling system, which keeps the pain to a tolerable level even when high energy is applied.  
”



## Here Comes a Painless Obesity Treatment Device We Want to Recommend to Patients: [LIPOcel™] Loaded with Latest HIFU Technology

### Dr. Hideaki Teramachi

Seishin Plastic and Aesthetic Surgery Osaka Clinic - Director / Cosmetic Clinic - Specialist  
Member of Japan Society of Aesthetic Plastic Surgery / Member in Japan Society of Aesthetic Surgery



“  
So, people have hoped to see an obesity treatment device that "can be easily recommended to patients" for its immediately felt reduction effects and little pain.  
”



A lot of patients hesitate about reducing size by using an obesity treatment device because of "pain". Addressing such concern, [LIPOcel™] is born as a "less painful" obesity treatment device. Finally, we've got a non-invasive obesity treatment device that delivers great satisfaction to patients, as it inflicts no pain and yields immediate effects by implementing a procedure with great power.

#### The less painful and highly effective obesity treatment device that adopts contact cooling method to strike the patient's "fat around the abdominal area"

Medical devices for treating obesity are available in various types that adopt Cryolipolysis or Radiofrequency methods. One catch is that they inflict irresistible pain or do not deliver visible instant size reduction as it absorbs the fat layer over an extended period of time, thus making patients who have undergone the procedure hesitate to return to receive the treatment.

So, people have hoped to see an obesity treatment device that "can be easily recommended to patients" for its immediately felt reduction effects and little pain. Then, I came to know [LIPOcel™], which destroys fat cells with HIFU technology. More than anything else, what made me choose the equipment is the cooling technology loaded in it.

It adopts contact cooling which protect the surface simultaneously HIFU energy heating HIFU with contact cooling developed for surface cooling is expected to mitigate pain and protect the epidermis from thermal damage. So, the patient can undergo procedures feeling almost no pain. Furthermore, as it causes no pain, it enables a powerful scan (maximum 150J/cm²; reference from Jeisys) on the targeted fat layer 13mm below the skin, using HIFU technology. And of course as it causes no downtime with flushing or burns, I thought this would be the perfect obesity treatment device that "can be easily recommended" to patients.

#### Since one of our patients experienced the abdominal reduction effect of 10 centimeters in just one month after the treatment, we are satisfied with its effect.

I see one more reason why I can recommend the device easily. Extra flab around the abdomen area will not easily go away as people get older. As the part of abdomen, especially lower abdomen, and the flanks are not remarkably improved with the workout or with a diet, a lot of patients come to us looking for some satisfiable solutions for loosing love handles or muffin tops.

#### [LIPOcel™] is effective in reducing fat around the abdomen.

With the surface of the handpiece kept cool at the fixed temperature of 5 degrees Celsius, it can increase its treatment power while protecting the epidermis. So, a) the equipment instantly destroys fat cells themselves in a single procedure and thus b) effectively destroys and discharges more fat cells in a given amount of time.

With the above two effects, it helps reduce patient's fat. Women in their late 30s or early 40s, who have soft subcutaneous fat and finds it difficult to lose weight, are most likely to feel significant effects. As demonstrated in the image on the left, we had a patient whose waist size decreased by 10 centimeters in just a month after going through the single treatment.

For Export

***LIPOnel***<sup>TM</sup>

**Jeisys**



171026-01